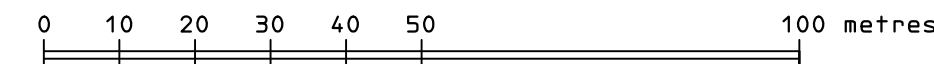


PLAN OF SUBDIVISION OF PARCEL A (DD 351341) OF THE NORTH 1/2 OF THE
SOUTHWEST 1/4 OF SECTION 19, GABRIOLA ISLAND, NANAIMO DISTRICT,
EXCEPT PLANS 23651, 10175, AND 45775.

PLAN EPP11544

BCGS 92G.011



THE INTENDED PLOT SIZE OF THIS PLAN IS 864mm IN
WIDTH BY 560mm IN HEIGHT (D SIZE) WHEN PLOTTED
AT A SCALE OF 1:1000

LEGEND

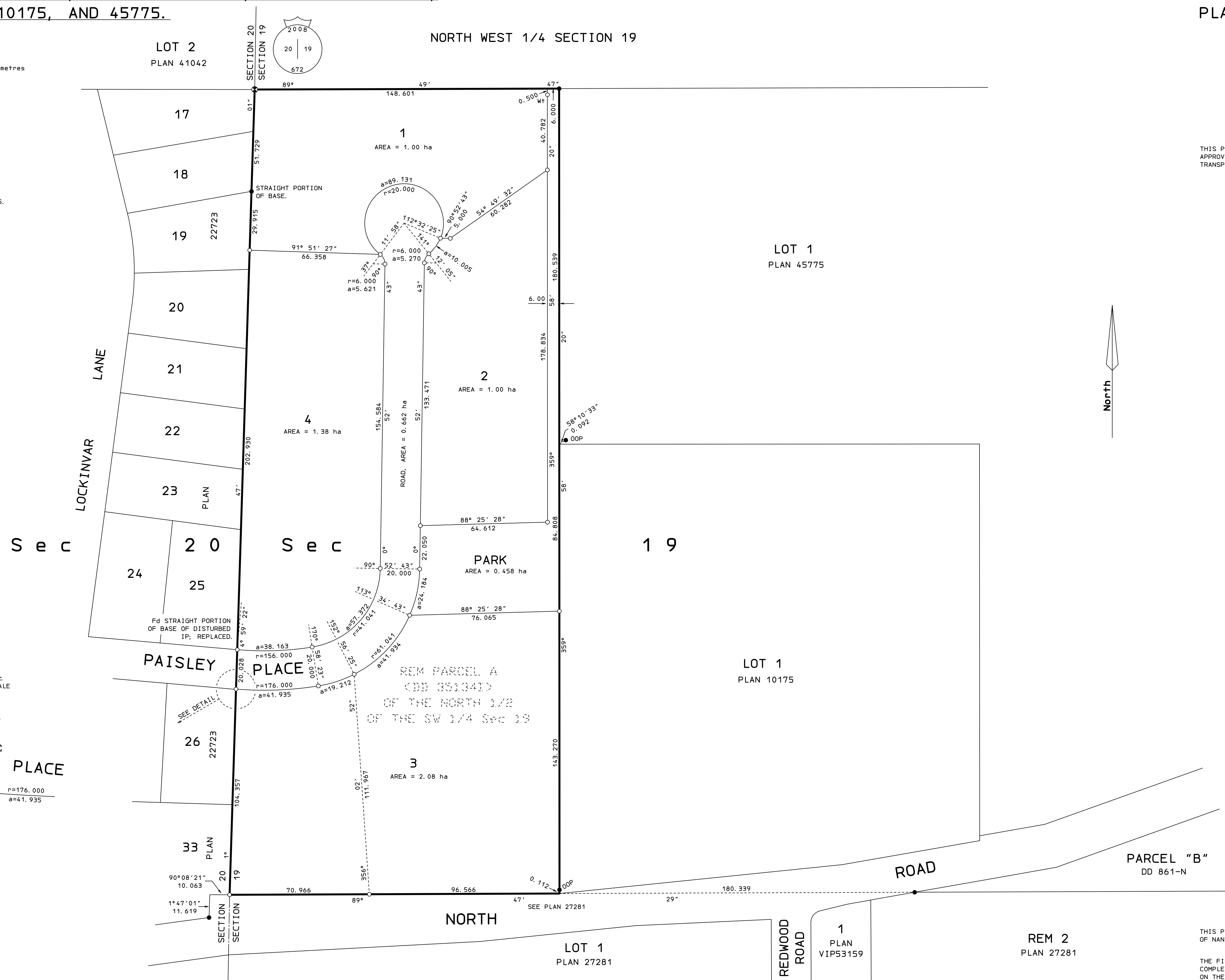
- ⊙ STANDARD CAPPED POST FOUND.
- STANDARD IRON POST FOUND.
- STANDARD IRON POST PLACED.
- OOP OUT OF POSITION.

BEARINGS ARE ASTRONOMIC AND DERIVED FROM PLAN 45775.

THIS PLAN SHOWS HORIZONTAL GROUND LEVEL DISTANCES
EXCEPT WHERE OTHERWISE NOTED.

THIS PLAN SHOWS ONE OR MORE WITNESS POSTS WHICH
ARE SET ALONG THE PRODUCTION OF THE PROPERTY
BOUNDARY UNLESS OTHERWISE NOTED.

THIS PLAN LIES WITHIN THE JURISDICTION OF THE
APPROVING OFFICER FOR THE MINISTRY OF
TRANSPORTATION AND INFRASTRUCTURE.



DETAIL
NOT TO SCALE

